

## Station Profiles – Non-Home Origin Maps

---

The following station maps depict non-home origin locations of weekday BART customers who travel to the station from non-home origins, like work, school, etc. These maps are available for selected stations with a sample size of at least 300 non-home origin trips and are based on data from BART's 2008 Station Profile Study. The report text and data tables are available in a separate PDF file at [www.bart.gov/profile](http://www.bart.gov/profile).

The points on each map are color coded by mode of access to the BART station. The points are weighted to reflect average weekday ridership at the station. For example, an origin point with a weight of seven will appear on the map as seven points, randomly dispersed around the actual point of origin. Note that the number of trips may be underrepresented in cases where multiple trips originate at the same location. Refer to *Appendix B* of the 2008 Station Profile Study report for geocoding details.

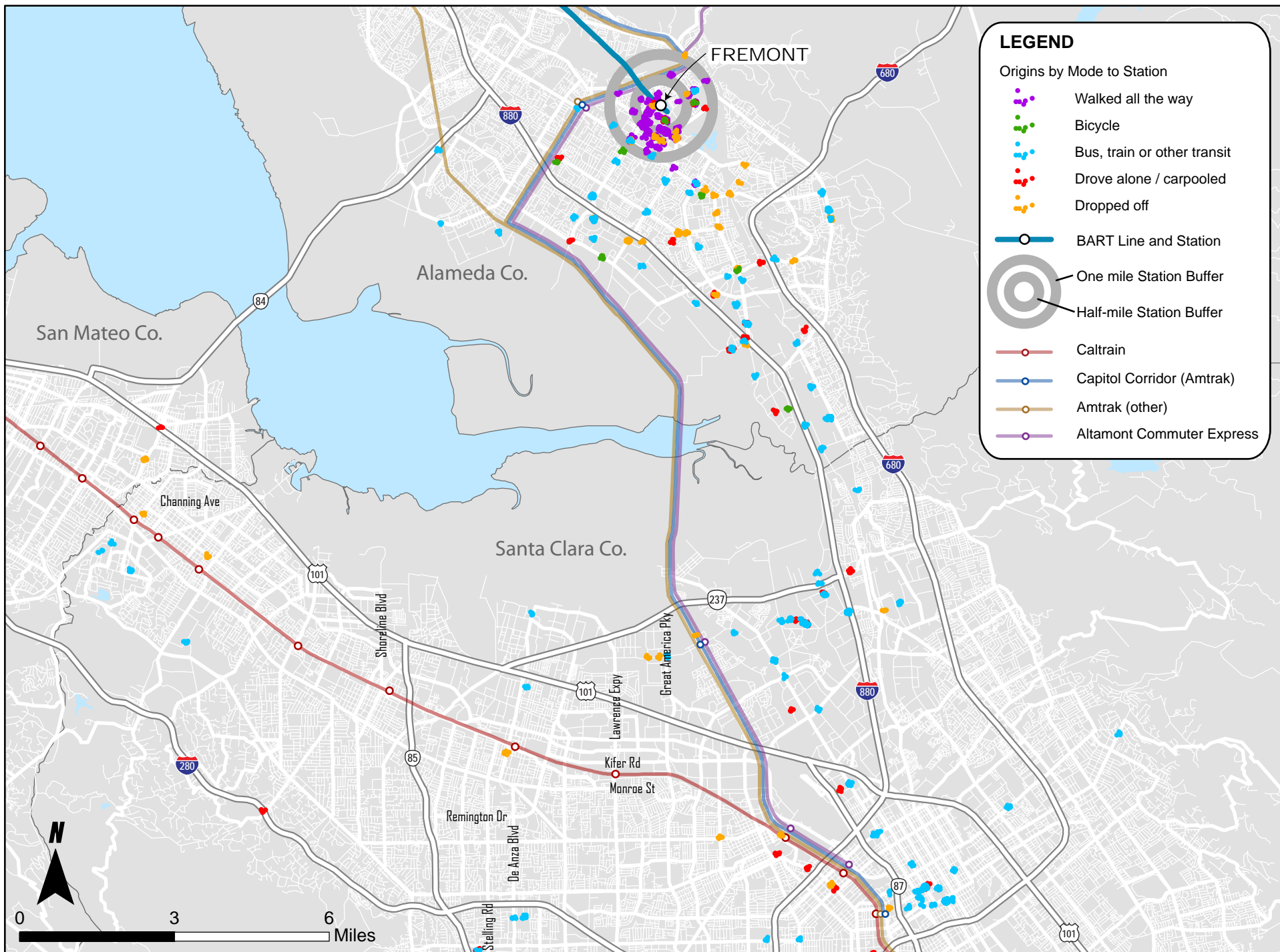
### ***List of station-level maps in this file***

1. Fremont: Non-Home Locations by Mode
2. Hayward: Non-Home Locations by Mode
3. Lake Merritt: Non-Home Locations by Mode
4. MacArthur: Non-Home Locations by Mode
5. Millbrae: Non-Home Locations by Mode
6. Powell St.: Non-Home Locations by Mode
7. Montgomery St.: Non-Home Locations by Mode
8. Rockridge: Non-Home Locations by Mode
9. San Francisco Int'l Airport (SFO): Non-Home Locations by Mode
10. Walnut Creek: Non-Home Locations by Mode

Non-home origin maps for other BART stations are available in a separate PDF file (in alphabetical order) at [www.bart.gov/profile](http://www.bart.gov/profile). Home origin maps and systemwide maps are also available.

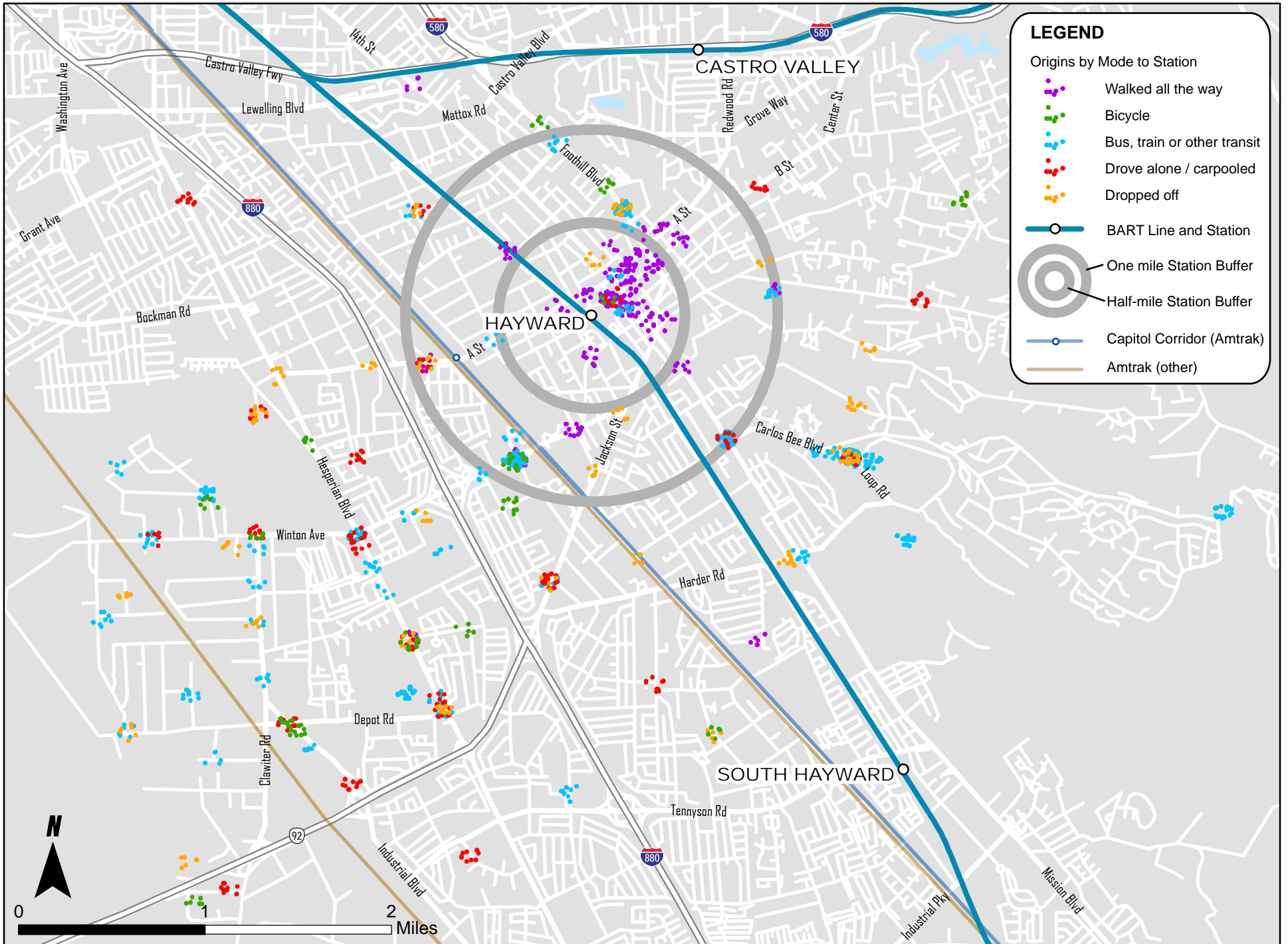
All Station Profile Study maps within this file were created by Nelson Nygaard.

# Fremont Station: Non-Home Locations of BART Riders by Mode



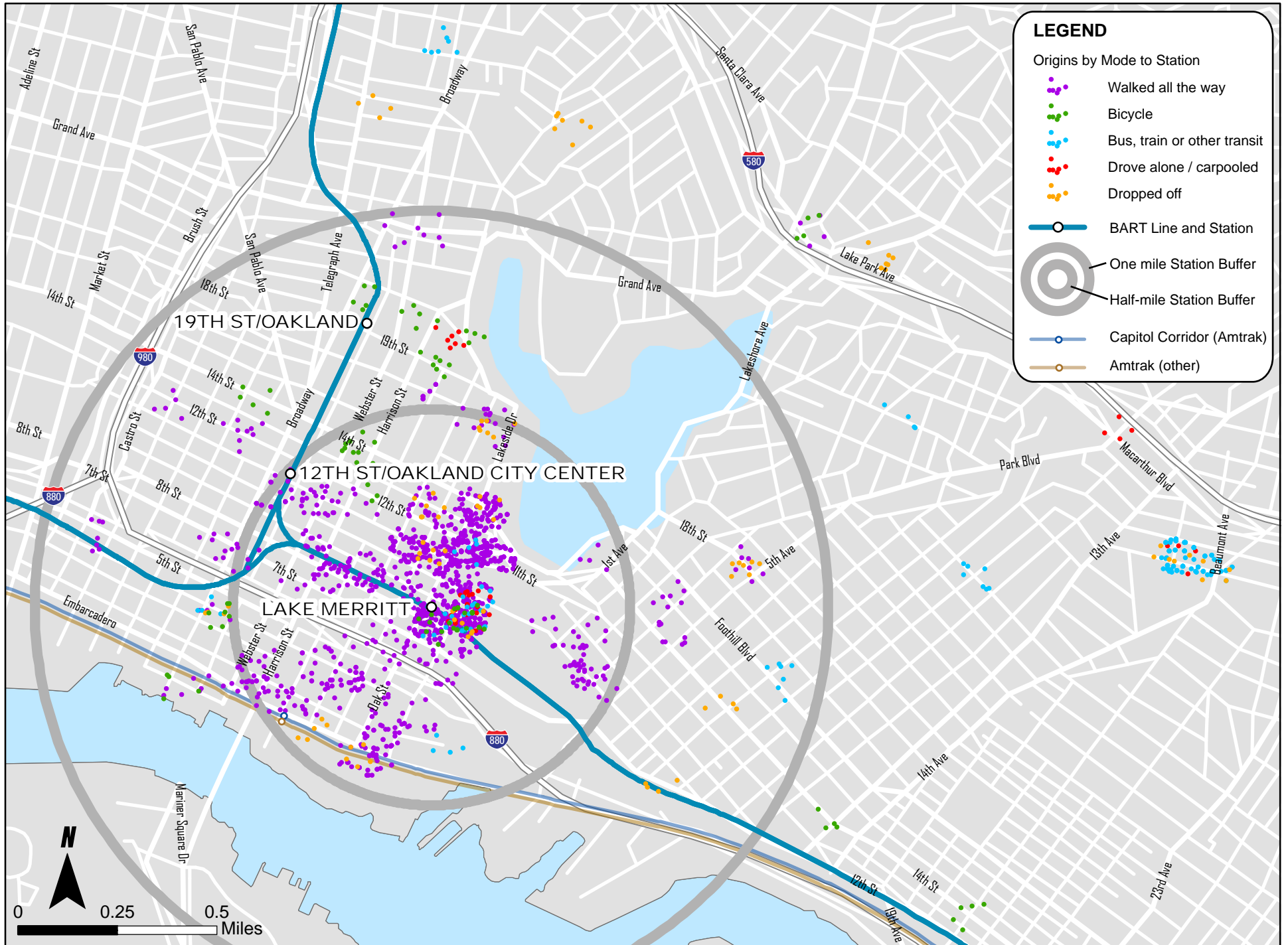
Data Sources: ESRI, 2008 BART Station Profile Study (weekday only; data are weighted from survey sample to represent average weekday ridership)

# Hayward Station: Non-Home Locations of BART Riders by Mode



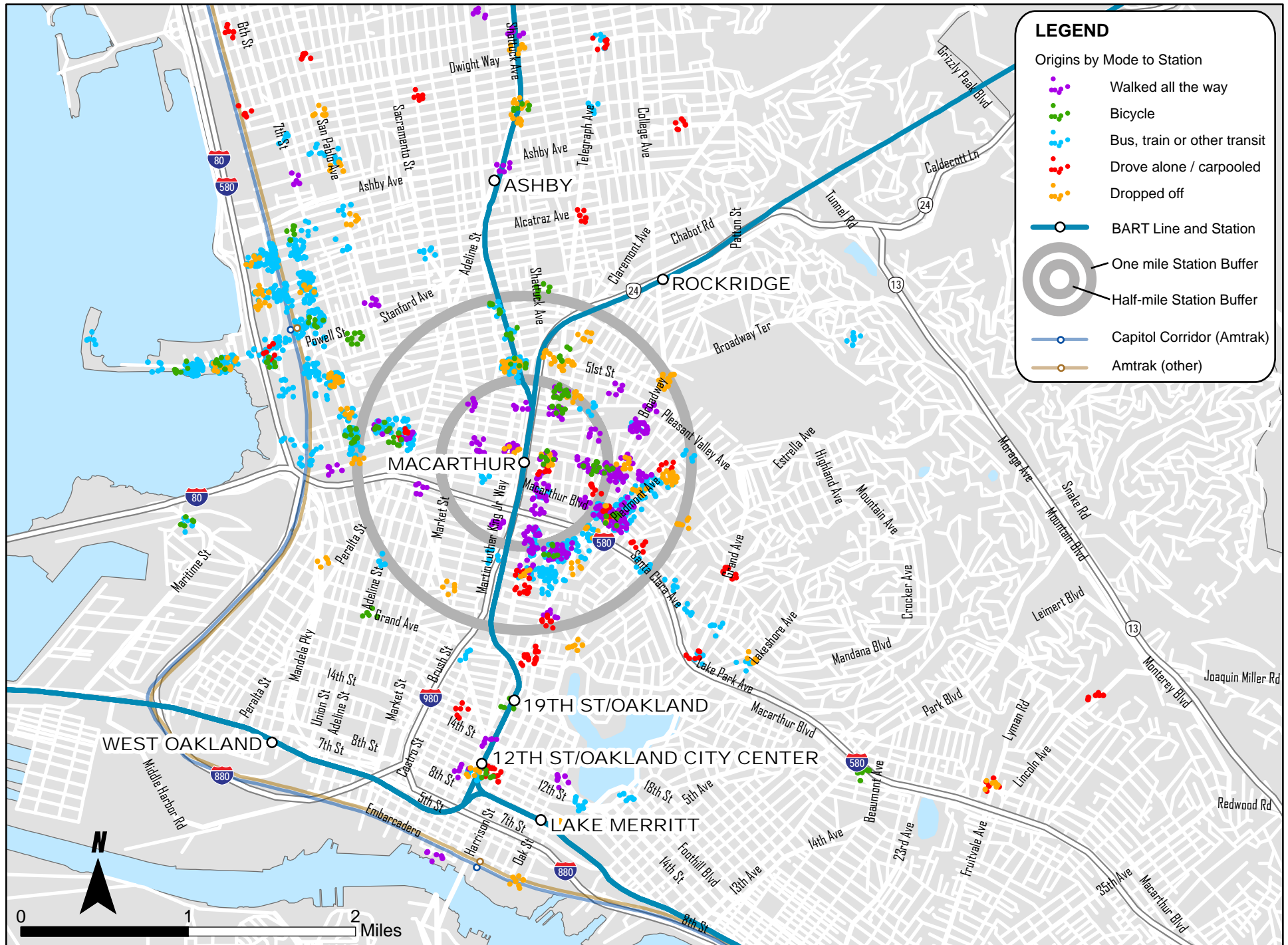
Data Sources: ESRI, 2008 BART Station Profile Study (weekday only; data are weighted from survey sample to represent average weekday ridership)

# Lake Merritt Station: Non-Home Locations of BART Riders by Mode



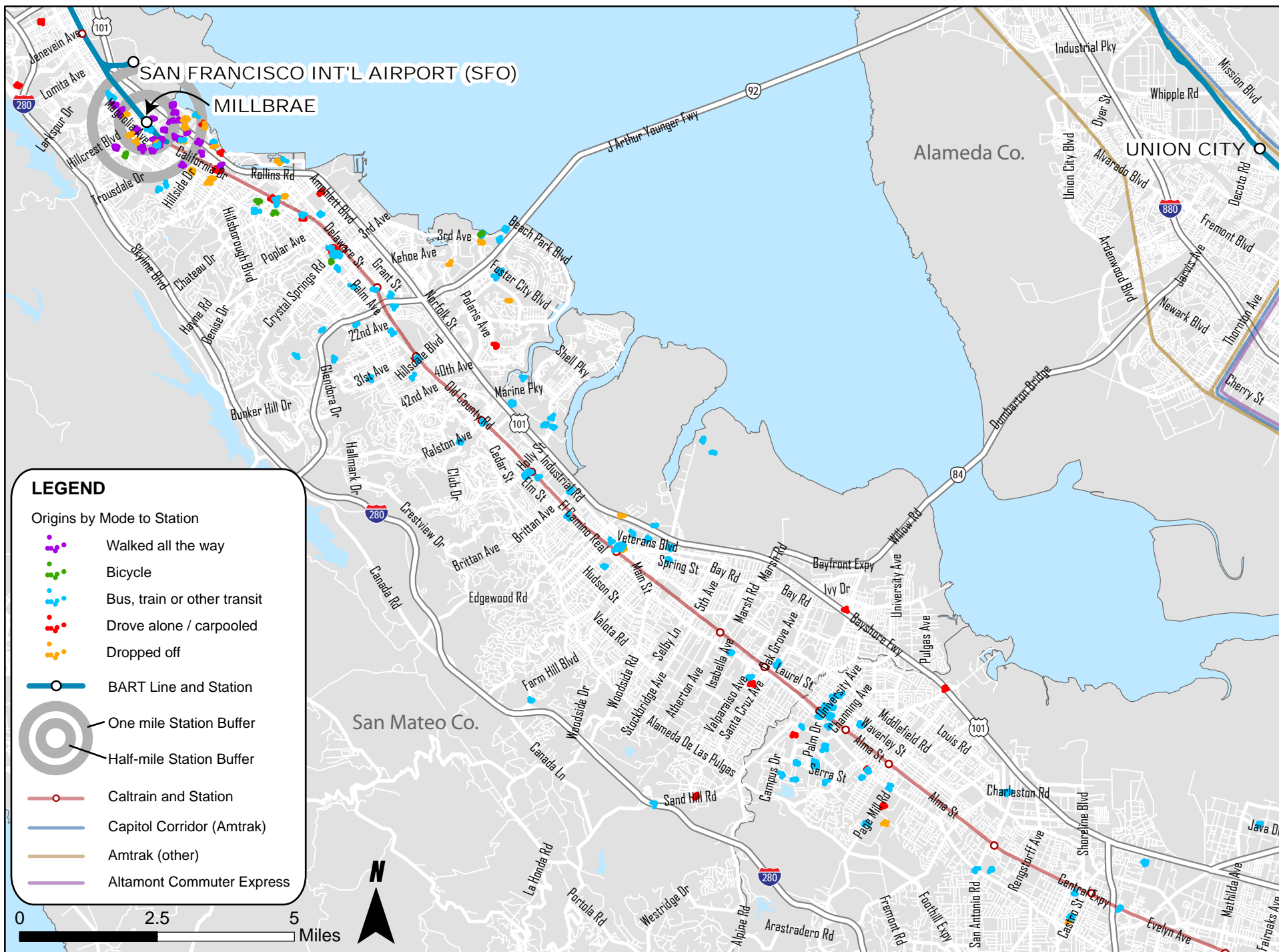
Data Sources: ESRI, 2008 BART Station Profile Study (weekday only; data are weighted from survey sample to represent average weekday ridership)

# MacArthur Station: Non-Home Locations of BART Riders by Mode



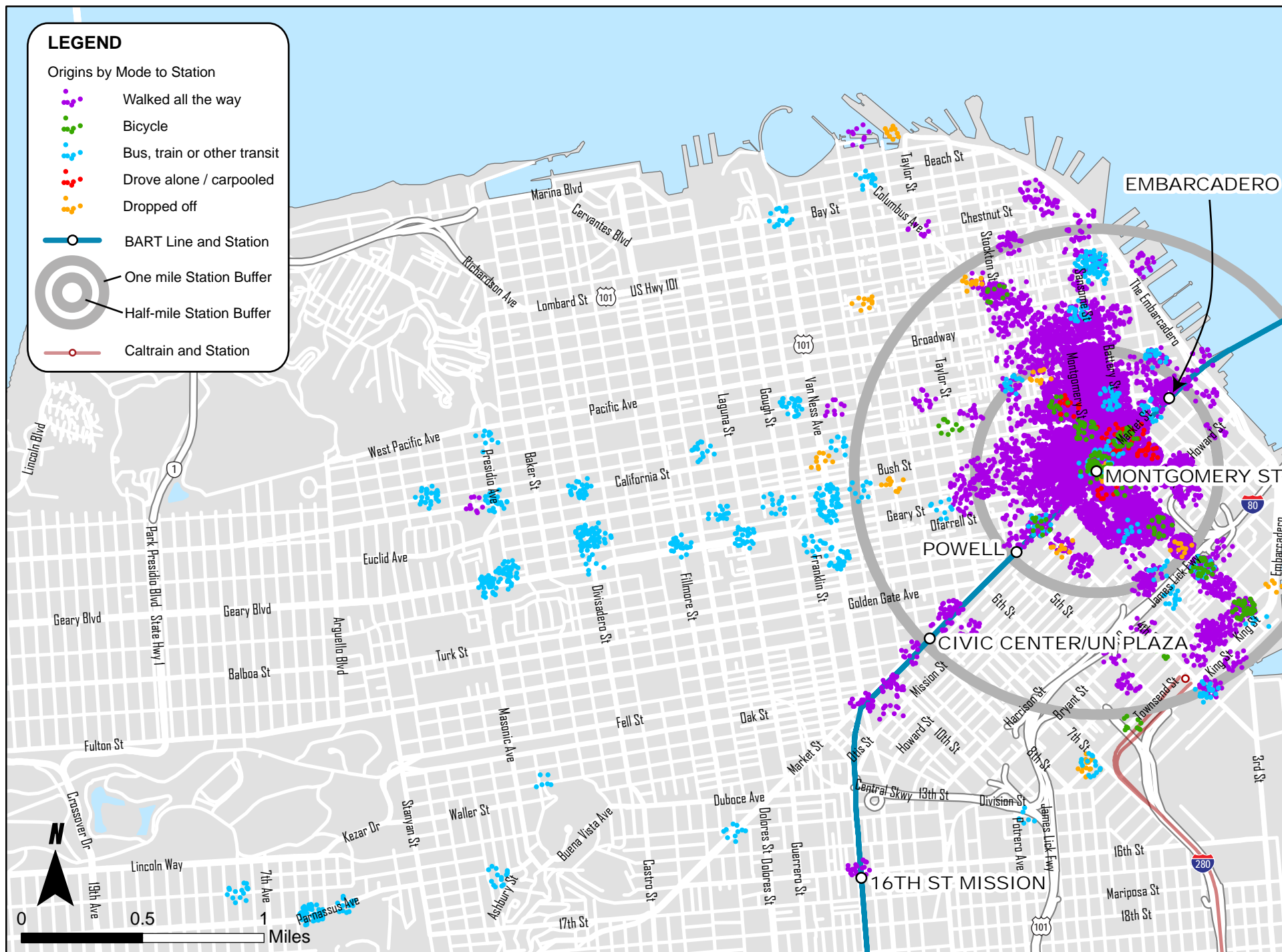
Data Sources: ESRI, 2008 BART Station Profile Study (weekday only; data are weighted from survey sample to represent average weekday ridership)

# Millbrae Station: Non-Home Locations of BART Riders by Mode



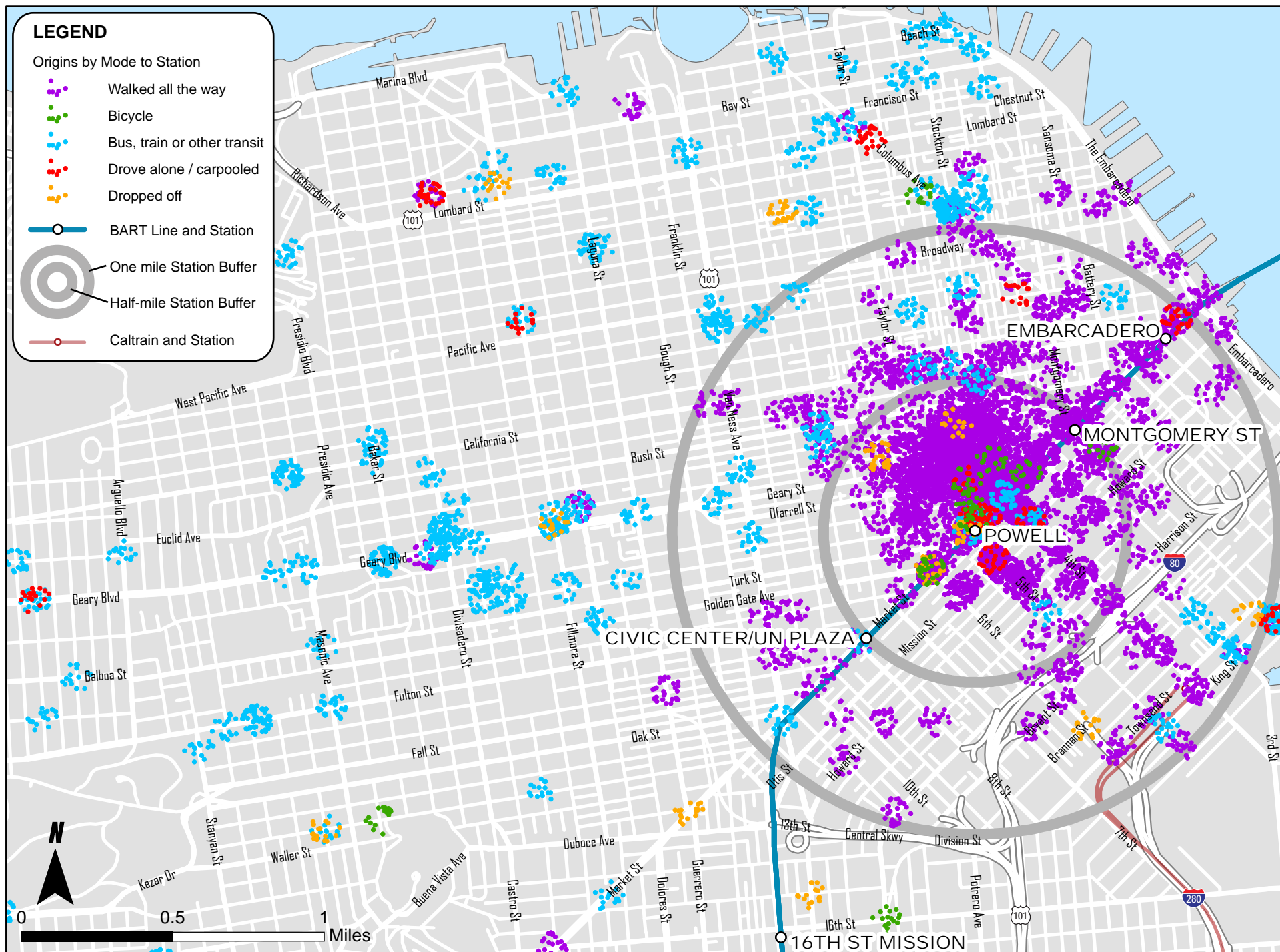
Data Sources: ESRI, 2008 BART Station Profile Study (weekday only; data are weighted from survey sample to represent average weekday ridership)

# Montgomery St. Station: Non-Home Locations of BART Riders by Mode



Data Sources: ESRI, 2008 BART Station Profile Study (weekday only; data are weighted from survey sample to represent average weekday ridership)

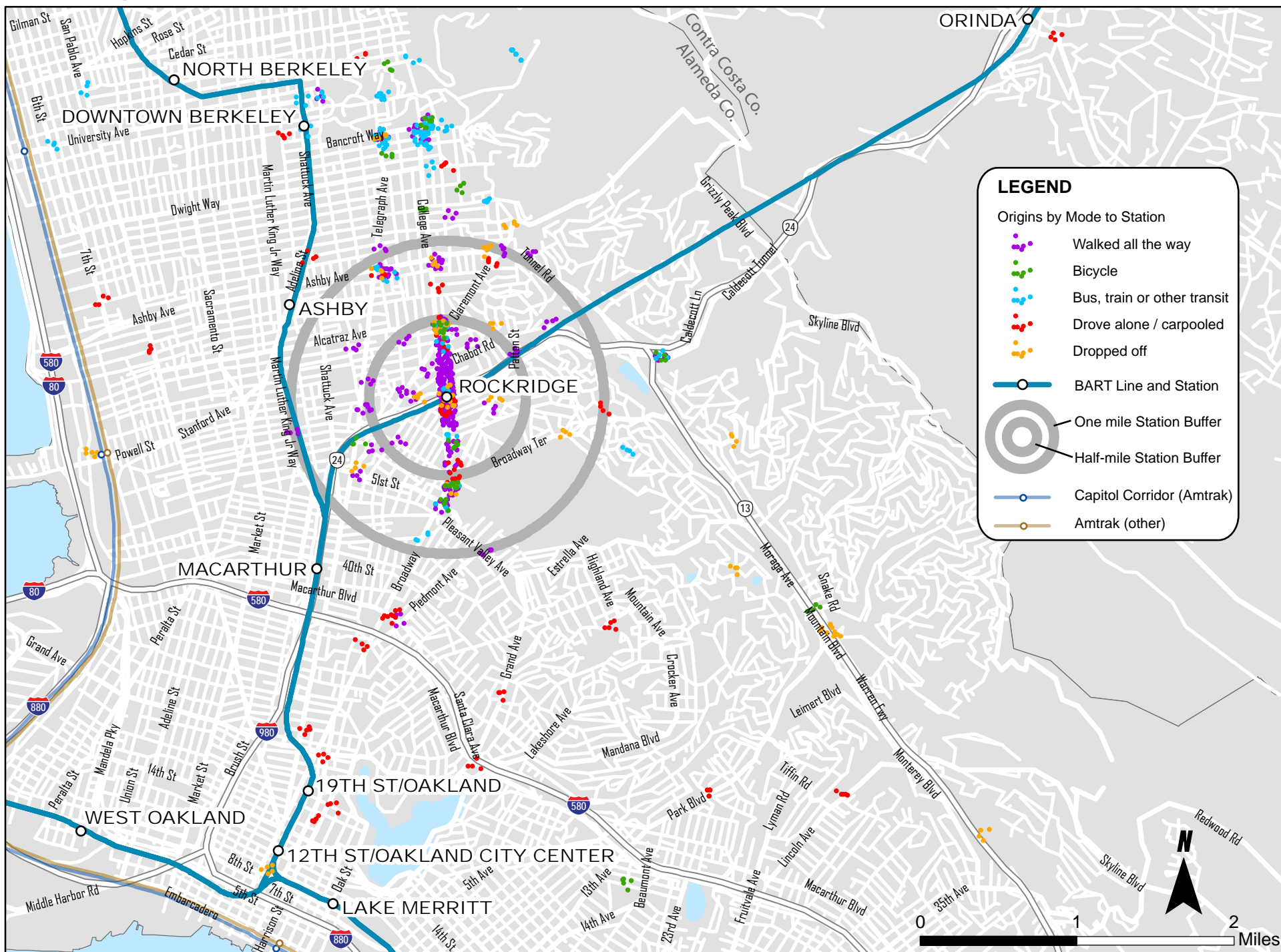
# Powell St. Station: Non-Home Locations of BART Riders by Mode



Data Sources: ESRI, 2008 BART Station Profile Study (weekday only; data are weighted from survey sample to represent average weekday ridership)

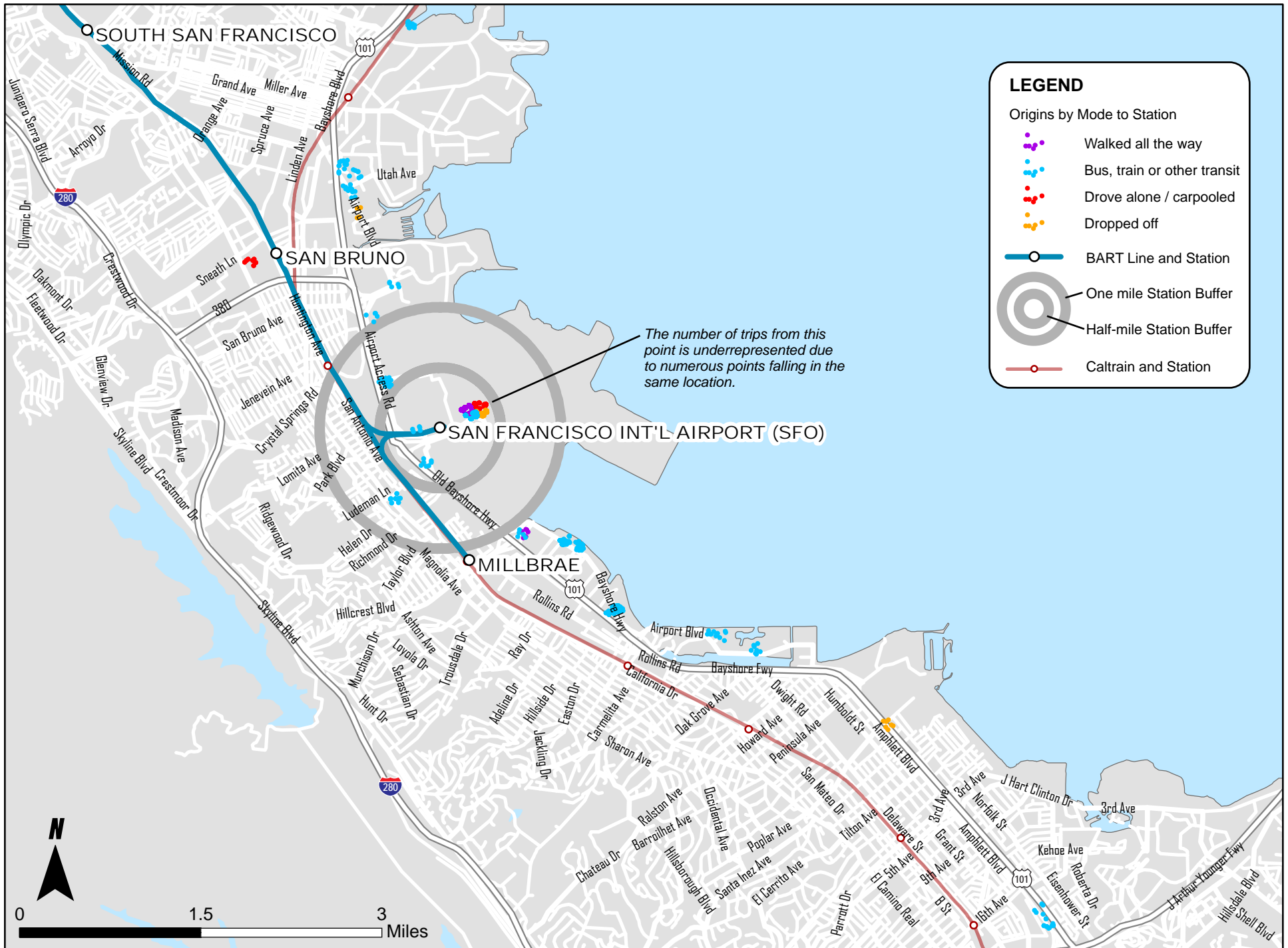


# Rockridge Station: Non-Home Locations of BART Riders by Mode



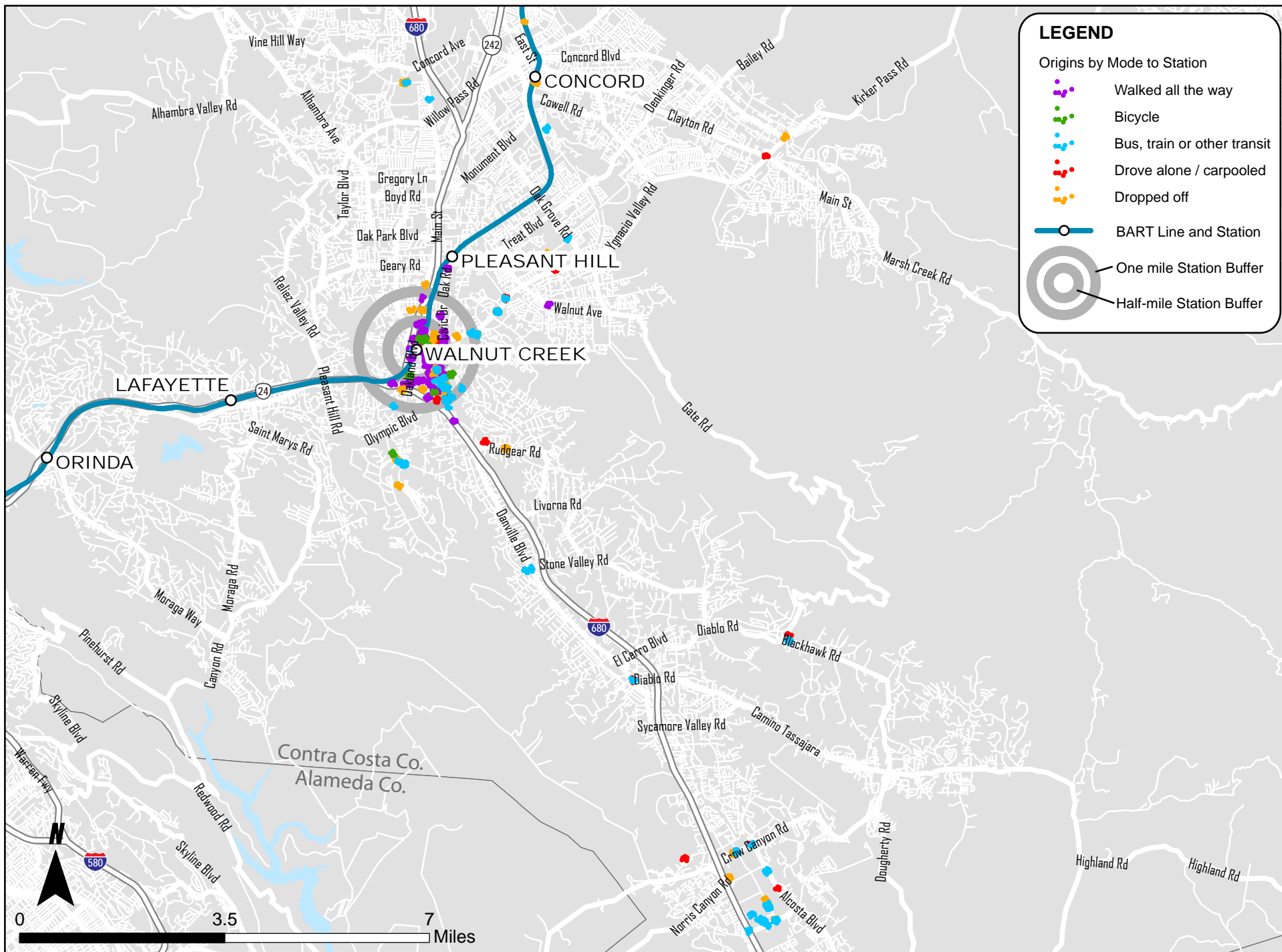
Data Sources: ESRI, 2008 BART Station Profile Study (weekday only; data are weighted from survey sample to represent average weekday ridership)

# San Francisco Int'l Airport (SFO) Station: Non-Home Locations of BART Riders by Mode



Data Sources: ESRI, 2008 BART Station Profile Study (weekday only; data are weighted from survey sample to represent average weekday ridership)

# Walnut Creek Station: Non-Home Locations of BART Riders by Mode



Data Sources: ESRI, 2008 BART Station Profile Study (weekday only; data are weighted from survey sample to represent average weekday ridership)