

2022

BART Redistricting: Plan C Following Current Boundary Lines and Points of Interest



GEOinovo Solutions Inc.

BART Redistricting

2/14/2022

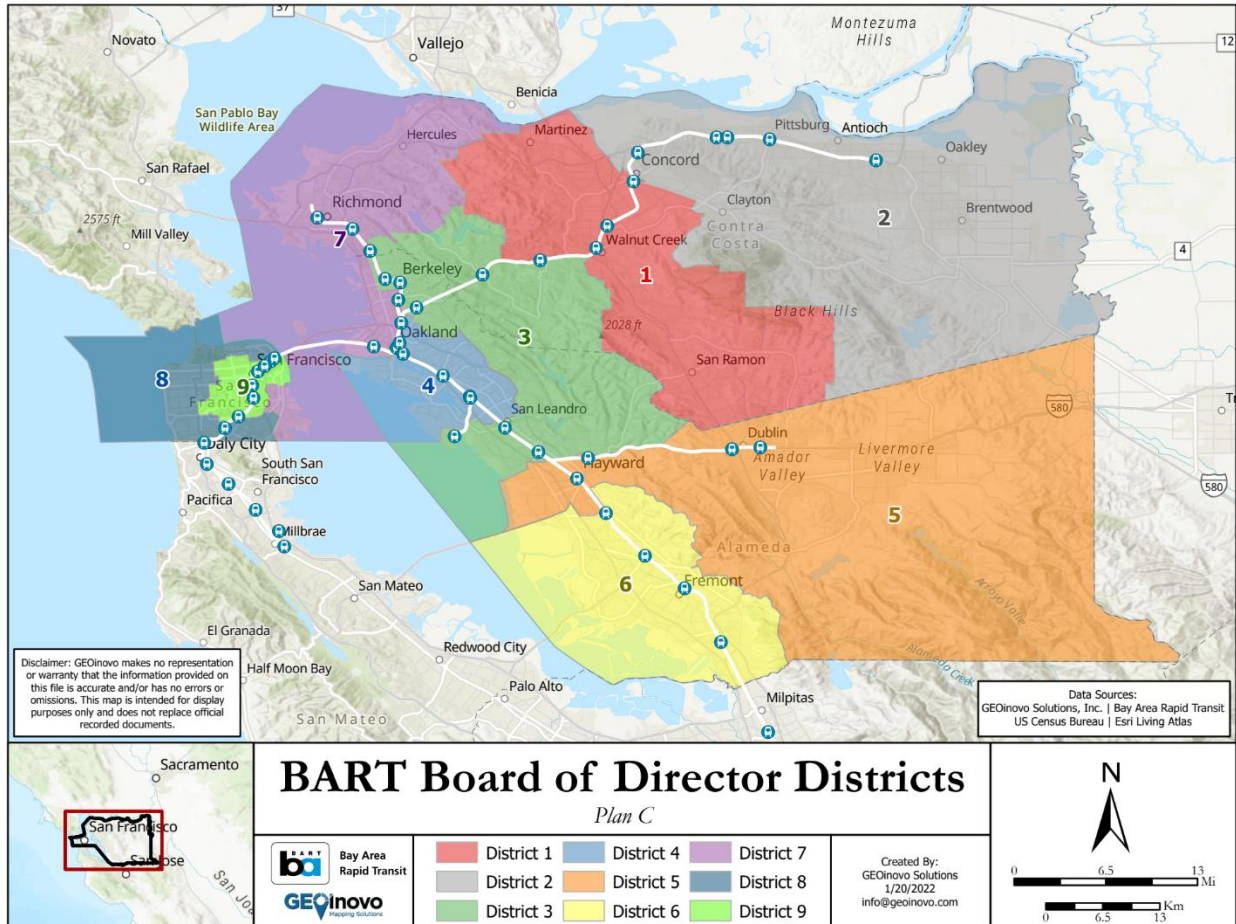
TABLE OF CONTENTS

- 1. Overview of Plan C 1
 - 1.1. Overview Map of Plan C..... 1
- 2. Plan C by District 2
 - 2.1. District 1 2
 - 2.2. District 2..... 4
 - 2.3. District 3..... 6
 - 2.4. District 4..... 8
 - 2.5. District 5..... 10
 - 2.6. District 6..... 12
 - 2.7. District 7..... 14
 - 2.8. District 8..... 16
 - 2.9. District 9..... 18

1. OVERVIEW OF PLAN C

1.1. OVERVIEW MAP OF PLAN C

Below shows the overview of Plan C. The individual districts are described further in Section 2. Plan C by District.



Changes to the Citizen Voting Age Population (CVAP) per District

This plan was developed using destination analysis of points of interest such as Colleges/Universities, Clinics/Medical Facilities, Social Service Facilities, Government Facilities, and other locations that may be likely destination points for BART riders. With this plan, some Districts remained similar while others changed. For example, District 6 maintains 95.7% of CVAP when compared to current districts. By contrast, District 9 maintains 77.7% of CVAP when compared to current districts.

Detailed breakdowns for each District are provided in Section 2. Plan C by District.

Bay Area Rapid Transit (BART) Census Population Shifts for Proposed Board of Director Districts

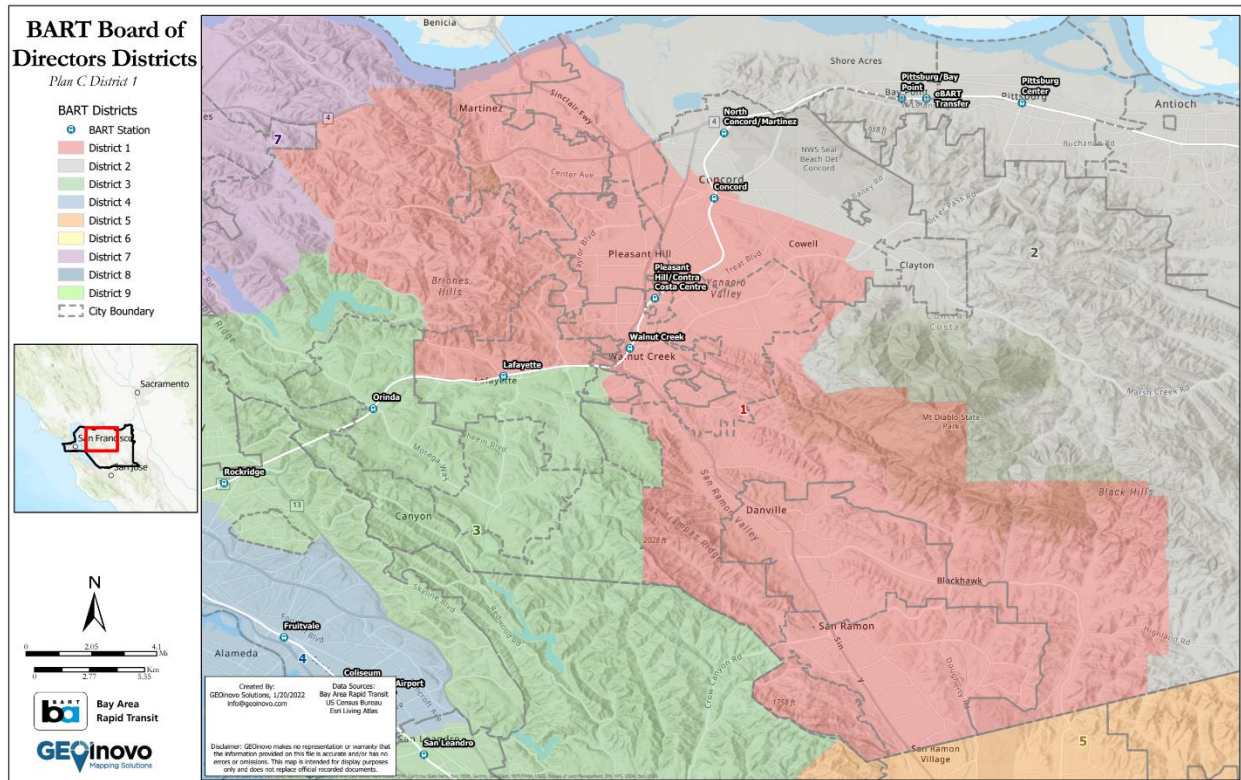
The population shifts for Plan C are similar to the CVAP population changes for each of the nine districts in Plan C. Population shifts for each district and each proposed plan vary depending on changes between 2010 and 2020 U.S. Census Block geography and different rates of population growth throughout the BART service area.

In this plan, all districts maintain greater than 77% of their current population. Three districts (Districts 2, 4, and 7) maintain greater than 90% of their current population and one district (District 6) maintains greater than 95% of their population when compared to current the districts. Districts 3, 8, and 9 maintain greater than 77% of their current population and Districts 1 and 5 maintain over 89% of their current populations. This plan follows the current boundaries but does contain more changes to the boundaries that Plan B.

Detailed Districts breakdowns for each District are provided in Section 2. Plan C by District.

2. PLAN C BY DISTRICT

2.1. DISTRICT 1



District 1 is in Contra Costa County and includes the City of Martinez, Pleasant Hill, most of Walnut Creek except a rural area in the Southwest of the City, the City of Danville, the City of San Ramon, the Northern part of the City of Lafayette – North of Route 24, and the Southern part of the City of Concord, including Cowell, Four Corners, and Meinert.

BART Stations included in District 1:

- Concord
- Pleasant Hill/Contra Costa Centre
- Walnut Creek
- Lafayette (shared with District 3)

2.1.1. CVAP Population Changes to District 1

The following table was taken from file “BART_CVAP_PLANABC_20220120”.

| Plan C, District 1: CVAP From Current Districts | Total CVAP | Percent CVAP |
|--|-------------------|---------------------|
| Total | 275,403 | 100.0% |
| District 1 | 252,930 | 91.8% |
| District 2 | 22,473 | 8.2% |
| District 3 | 0 | 0.0% |

Figure 1 District 1 maintains 91.8% of the current CVAP population and takes 8.2% from the current District 2.

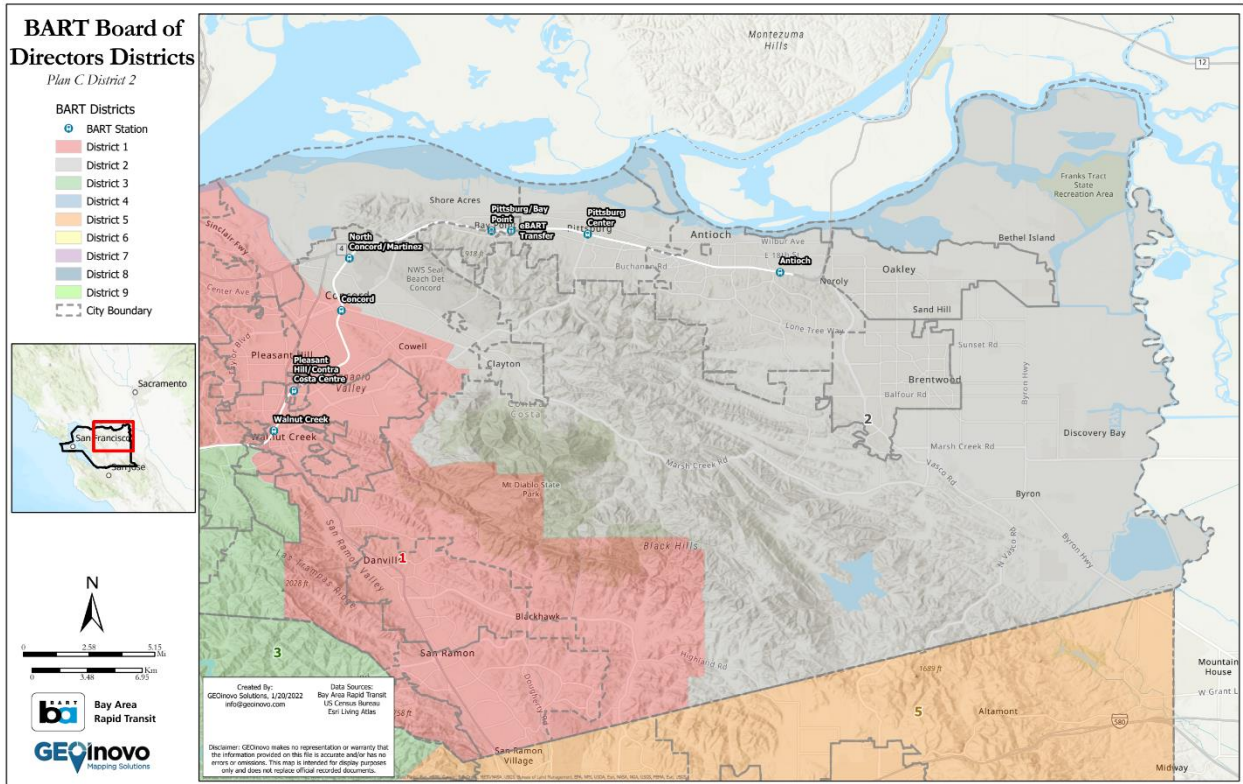
2.1.2. Population Changes to District 1

The following table was taken from file “BART_Population_PLANABC_20220120”.

| Plan C, District 1: Population From Current Districts | Total Population | Percent Population |
|--|-------------------------|---------------------------|
| Total | 414,067 | 100.0% |
| District 1 | 371,838 | 89.8% |
| District 2 | 42,229 | 10.2% |

Figure 2 District 1 maintains 89.8% of the current population and takes 10.2% from the current District 2.

2.2. DISTRICT 2



District 2 is in Contra Costa County and includes the City of Pittsburg, the City of Antioch, the City of Brentwood, the City of Oakley, and the Northeastern part of the City of Concord including NWS Seal Beach Det Concord.

BART Stations included in District 2:

- Antioch
- Pittsburg Center
- eBART Transfer
- Pittsburg/Bay Point
- North Concord/Martinez

2.2.1. CVAP Population Changes to District 2

The following table was taken from file “BART_CVAP_PLANABC_20220120”.

| Plan C, District 2: CVAP From Current Districts | Total CVAP | Percent CVAP |
|--|-----------------------|-------------------------|
| Total | 266,360 | 100.0% |
| District 1 | 22,308 | 8.4% |
| District 2 | 244,052 | 91.6% |

Figure 3 District 2 maintains 91.6% of the current CVAP population and takes 8.4% from the current District 1.

2.2.2. Population Changes to District 2

The following table was taken from file “BART_Population_PLANABC_20220120”.

| Plan C, District 2: Population From Current Districts | Total Population | Percent Population |
|--|-----------------------------|-------------------------------|
| Total | 414,070 | 100.0% |
| District 1 | 28,304 | 6.8% |
| District 2 | 385,766 | 93.2% |

Figure 4 District 2 maintains 93.2% of the current population and takes 6.8% from the current District 1.

| Plan C, District 3: CVAP From Current Districts | Total CVAP | Percent CVAP |
|--|-----------------------|-------------------------|
| Total | 297,744 | 100.0% |
| District 1 | 9,891 | 3.3% |
| District 3 | 231,809 | 77.9% |
| District 4 | 18,205 | 6.1% |
| District 5 | 34,933 | 11.7% |
| District 7 | 2,906 | 1.0% |

Figure 5 District 3 maintains 77.9% of the current CVAP population and takes 11.7% from the current District 5, 6.1% from the current District 4, and 3.3% from the current District 1.

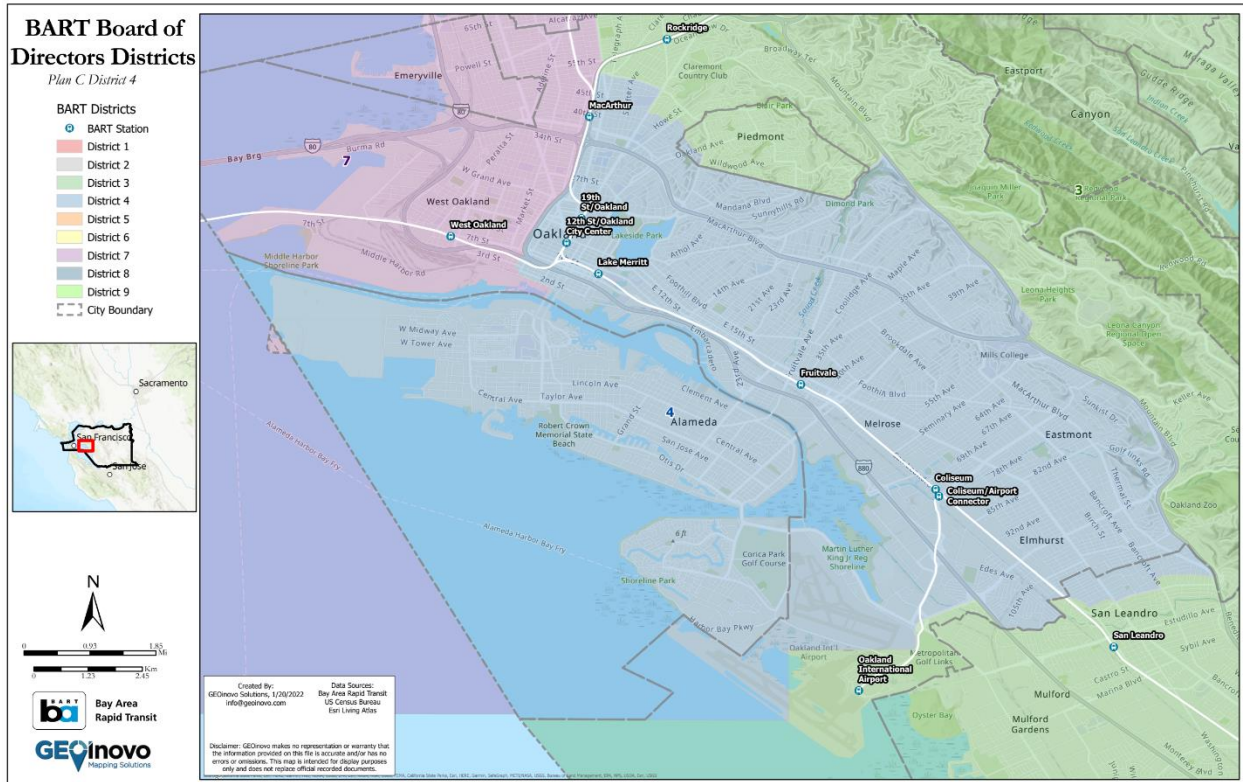
2.3.2. Population Changes to District 3

The following table was taken from file “BART_Population_PLANABC_20220120”.

| Plan C, District 3: Population From Current Districts | Total Population | Percent Population |
|--|-----------------------------|-------------------------------|
| Total | 413,957 | 100.0% |
| District 1 | 11,114 | 2.7% |
| District 3 | 323,078 | 78.0% |
| District 4 | 25,522 | 6.2% |
| District 5 | 50,936 | 12.3% |
| District 7 | 3,307 | 0.8% |

Figure 6 District 3 maintains 78.0% of the current population and takes 12.3% from the current District 5, 6.2% from the current District 4, and 2.7% from the current District 1.

2.4. DISTRICT 4



District 4 is in Alameda County and includes the City of Alameda and the Oakland neighborhoods of Elmhurst, Eastmont, and Melrose. Other points of interest in District 4 include Mills College, Diamond Park, Oakland Medical Center, Eastmont Town Center, and Durant Square Mall.

BART Stations included in District 4:

- MacArthur (shared with District 7)
- 19th St/Oakland
- 12th St/Oakland City Center
- Lake Merritt
- Fruitvale
- Coliseum
- Coliseum/Airport Connector

2.4.1. CVAP Population Changes to District 4

The following table was taken from file “BART_CVAP_PLANABC_20220120”.

| Plan C, District 4: CVAP From Current Districts | Total CVAP | Percent CVAP |
|--|-----------------------|-------------------------|
| Total | 262,476 | 100.0% |
| District 3 | 15,282 | 5.8% |
| District 4 | 246,681 | 94.0% |
| District 7 | 513 | 0.2% |

Figure 7 District 4 maintains 94.0% of the current CVAP population and takes 5.8% from the current District 3 and 0.2% from the current District 7.

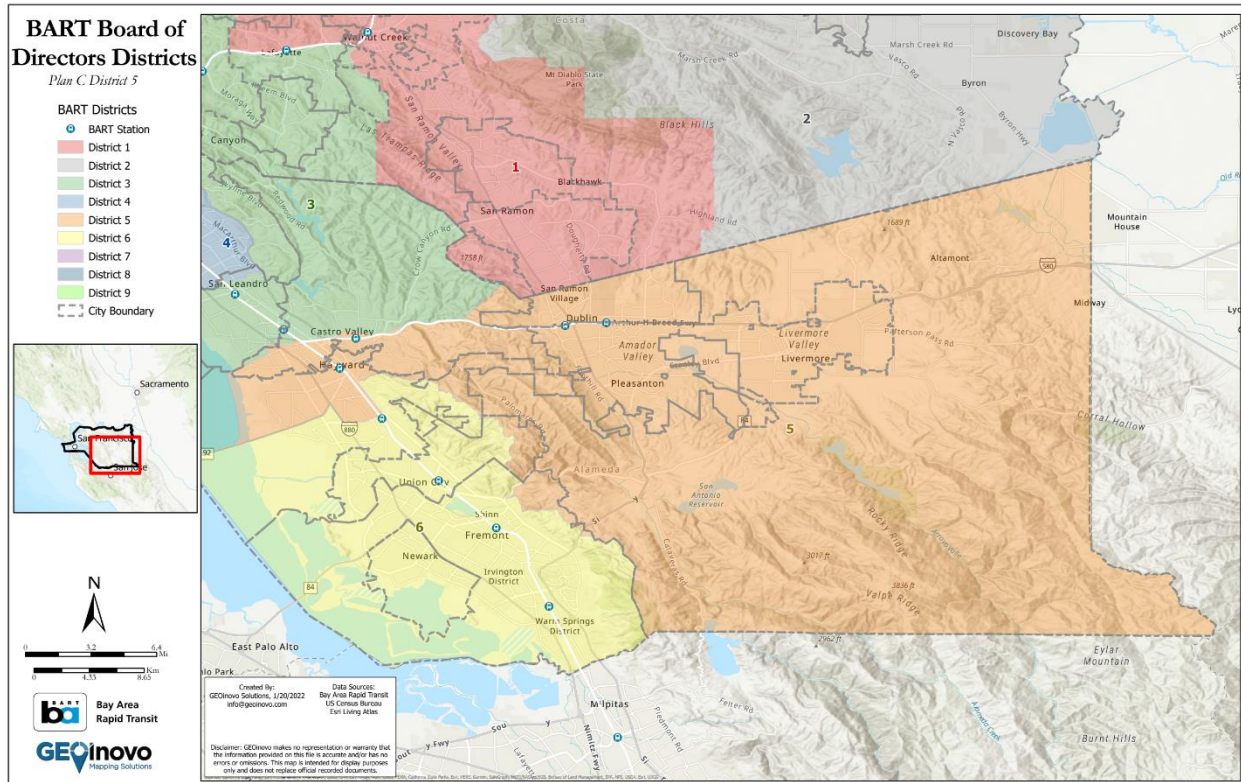
2.4.2. Population Changes to District 4

The following table was taken from file “BART_Population_PLANABC_20220120”.

| Plan C, District 4: Population From Current Districts | Total Population | Percent Population |
|--|-----------------------------|-------------------------------|
| Total | 413,944 | 100.0% |
| District 3 | 20,508 | 5.0% |
| District 4 | 392,583 | 94.8% |
| District 7 | 853 | 0.2% |

Figure 8 District 4 maintains 94.8% of the current population and takes 5.0% from the current District 3 and 0.2% from District 7.

2.5. DISTRICT 5



District 5 is in Alameda County and includes the City of Hayward north of Highway 292 and the populated areas bounded by Highway 880 to the west, Highway 238 to the east, and W Tennyson Rd to the south. Major places and landmarks in this area include the Hayward Executive Airport, Hayward Regional Shoreline, Fairview, Sorensen, Don Castro Regional Recreation Area, and a residential development to the northwest of TPC Stonebrae Country Club. District 5 also includes the City of Pleasanton, the City of Livermore, the City of Dublin, and rural areas of east Alameda County.

BART Stations included in District 5:

- Hayward
- Castro Valley
- West Dublin/Pleasanton
- Dublin/Pleasanton

2.5.1. CVAP Population Changes to District 5

The following table was taken from file “BART_CVAP_PLANABC_20220120”.

| Plan C, District 5: CVAP From Current Districts | Total CVAP | Percent CVAP |
|--|-----------------------|-------------------------|
| Total | 252,263 | 100.0% |
| District 2 | 0 | 0.0% |
| District 3 | 27,086 | 10.7% |
| District 5 | 224,039 | 88.8% |
| District 6 | 1,138 | 0.5% |

Figure 9 District 5 maintains 88.8% of the current CVAP population and takes 10.7% from the current District 3 and 0.5% from the current District 6.

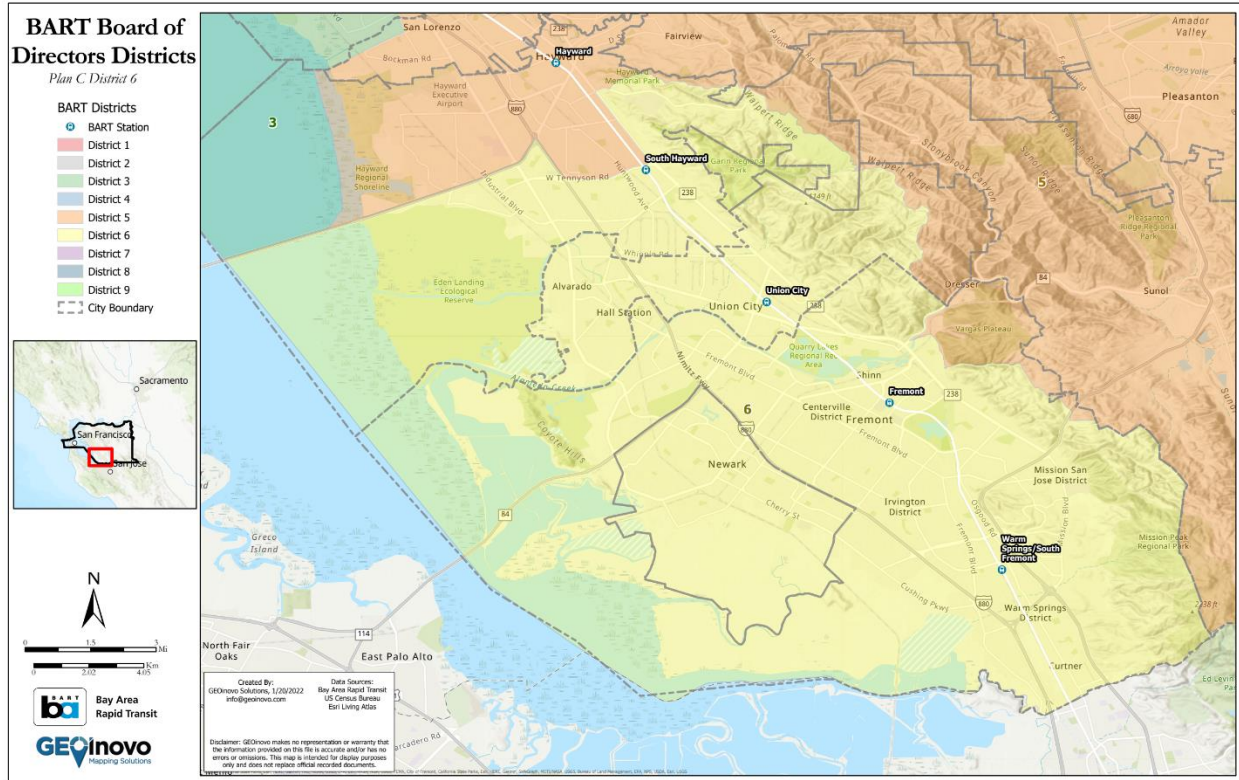
2.5.2. Population Changes to District 5

The following table was taken from file “BART_Population_PLANABC_20220120”.

| Plan C, District 5: Population From Current Districts | Total Population | Percent Population |
|--|-----------------------------|-------------------------------|
| Total | 414,250 | 100.0% |
| District 3 | 43,496 | 10.5% |
| District 5 | 369,159 | 89.1% |
| District 6 | 1,595 | 0.4% |

Figure 10 District 5 maintains 89.1% of the current population and takes 0.4% from the current District 6 and 10.5% from the current District 3.

2.6. DISTRICT 6



District 6 is in Alameda County and includes the City of Fremont, Union City, the City of Newark, and the Southwestern part of the City of Hayward. Major landmarks include California State University East Bay, Eden Landing Ecological Reserve, and the northwest area of Mission Peak Regional Park.

BART Stations included in District 6:

- South Hayward
- Union City
- Fremont
- Warm Springs/South Fremont

2.6.1. CVAP Population Changes to District 6

The following table was taken from file “BART_CVAP_PLANABC_20220120”.

| Plan C, District 6: CVAP From Current Districts | Total CVAP | Percent CVAP |
|--|-------------------|---------------------|
| Total | 257,118 | 100.0% |
| District 5 | 11,141 | 4.3% |
| District 6 | 245,977 | 95.7% |

Figure 11 District 6 maintains 95.7% of the current CVAP population and takes 4.3% from the current District 5.

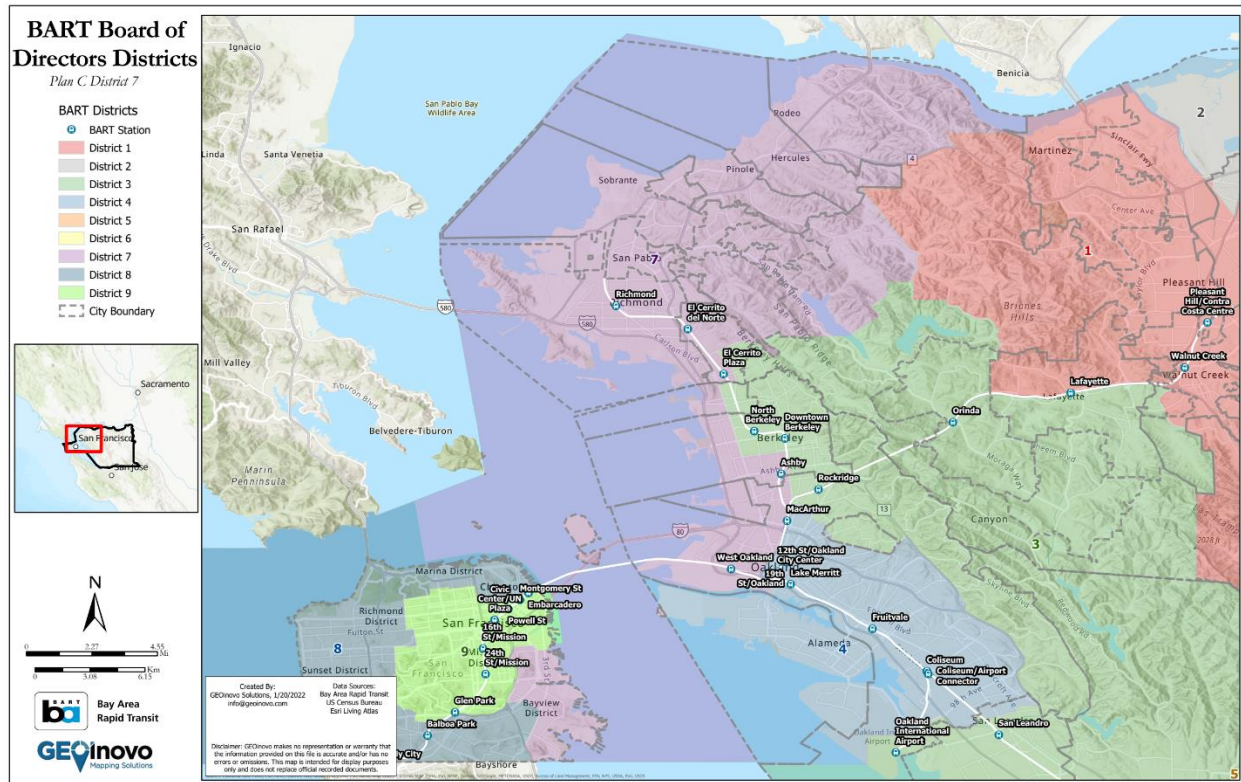
2.6.2. Population Changes to District 6

The following table was taken from file “BART_Population_PLANABC_20220120”.

| Plan C, District 6: Population From Current Districts | Total Population | Percent Population |
|--|-------------------------|---------------------------|
| Total | 414,102 | 100.0% |
| District 5 | 16,649 | 4.0% |
| District 6 | 397,453 | 96.0% |

Figure 12 District 6 maintains 96.0% of the current population and takes 4.0% from the current District 5.

2.7. DISTRICT 7



District 7 is in Contra Costa, Alameda, and San Francisco Counties and includes the City of Richmond, Union City, the City of Pinole, the City of Hercules, the Western part of Berkeley along the waterfront, the City of Emeryville, West Oakland, the Bayview District, and the Portrero District on the east side of San Francisco..

BART Stations included in District 7:

- Richmond
- El Cerrito del Norte
- El Cerrito Plaza (shared with District 3)
- Ashby (shared with District 3)
- 19th St/Oakland (shared with District 4)
- 12th St/Oakland City Center (shared with District 4)
- MacArthur (shared with District 4)
- West Oakland
-

2.7.1. CVAP Population Changes to District 7

The following table was taken from file “BART_CVAP_PLANABC_20220120”.

| Plan C, District 7: CVAP From Current Districts | Total CVAP | Percent CVAP |
|--|-------------------|---------------------|
| Total | 255,654 | 100.0% |
| District 1 | 220 | 0.1% |
| District 3 | 10,842 | 4.2% |
| District 7 | 235,864 | 92.3% |
| District 9 | 8,728 | 3.4% |

Figure 13 District 7 maintains 92.3% of the current CVAP population and takes 0.1% from the current District 1, 4.2% from the current District 3, 3.4% from the current District 9.

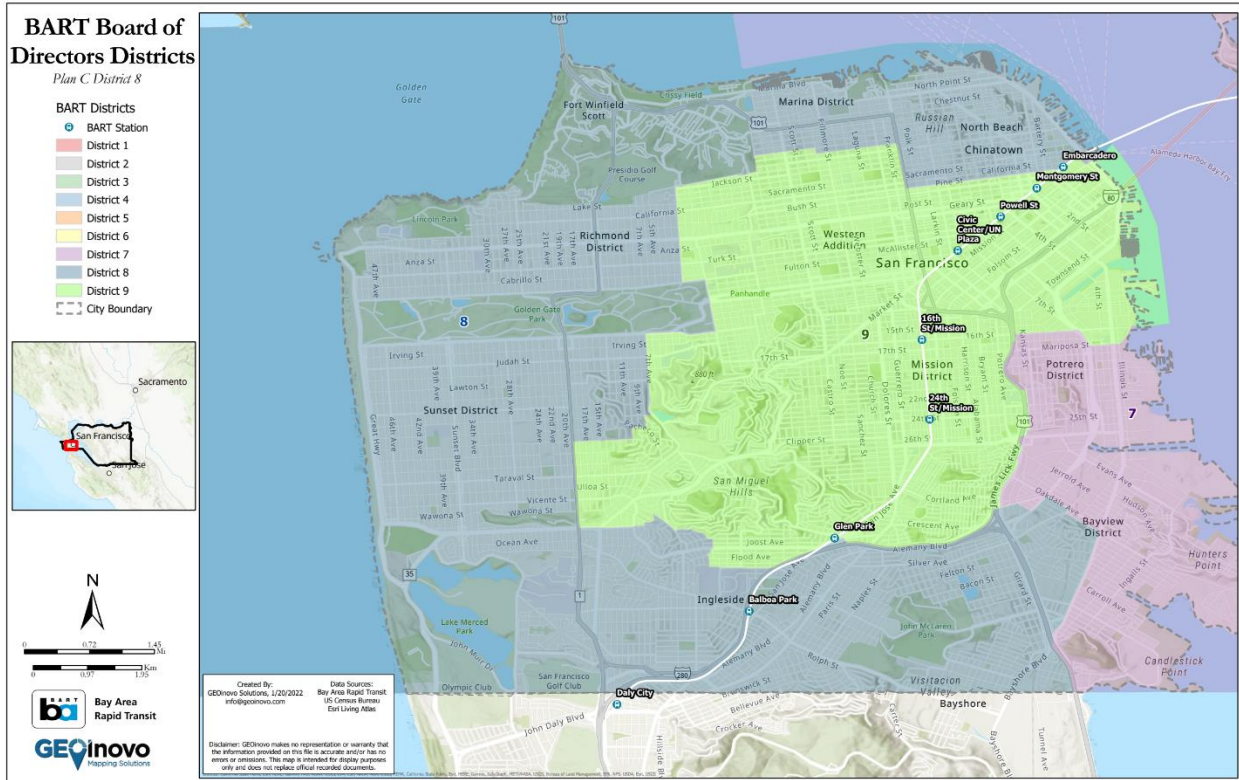
2.7.2. Population Changes to District 7

The following table was taken from file “BART_Population_PLANABC_20220120”.

| Plan C, District 7: Population From Current Districts | Total Population | Percent Population |
|--|-------------------------|---------------------------|
| Total | 414,046 | 100.0% |
| District 1 | 228 | 0.1% |
| District 3 | 15,585 | 3.8% |
| District 7 | 385,709 | 93.2% |
| District 9 | 12,524 | 3.0% |

Figure 14 District 7 maintains 93.2% of the current population and takes 0.1% from District 1, 3.8% from the current District 3, and 3.0% from the current District 9.

2.8. DISTRICT 8



District 8 in San Francisco County includes the following neighborhoods and points of interest in San Francisco: North Beach, Chinatown, Marina District, Fort Winfield Scott, Richmond District, Sunset District, Ingleside, and John McLaren Park, the Golden Gate Bridge, and the world-famous Lombard St..

BART Stations included in District 8:

- Balboa Park
- Glen Park (shared with District 9)
- Powell St (shared with District 9)
- Montgomery St (shared with District 9)
- Embarcadero (shared with District 9)

2.8.1. CVAP Population Changes to District 8

The following table was taken from file “BART_CVAP_PLANABC_20220120”.

| Plan C, District 8: CVAP From Current Districts | Total CVAP | Percent CVAP |
|--|-----------------------|-------------------------|
| Total | 322,943 | 100.0% |
| District 7 | 11,371 | 3.5% |
| District 8 | 256,379 | 79.4% |
| District 9 | 55,193 | 17.1% |

Figure 15 District 8 maintains 79.4% of the current CVAP population and takes 17.1% from the current District 9 and 3.5% from the current District 7.

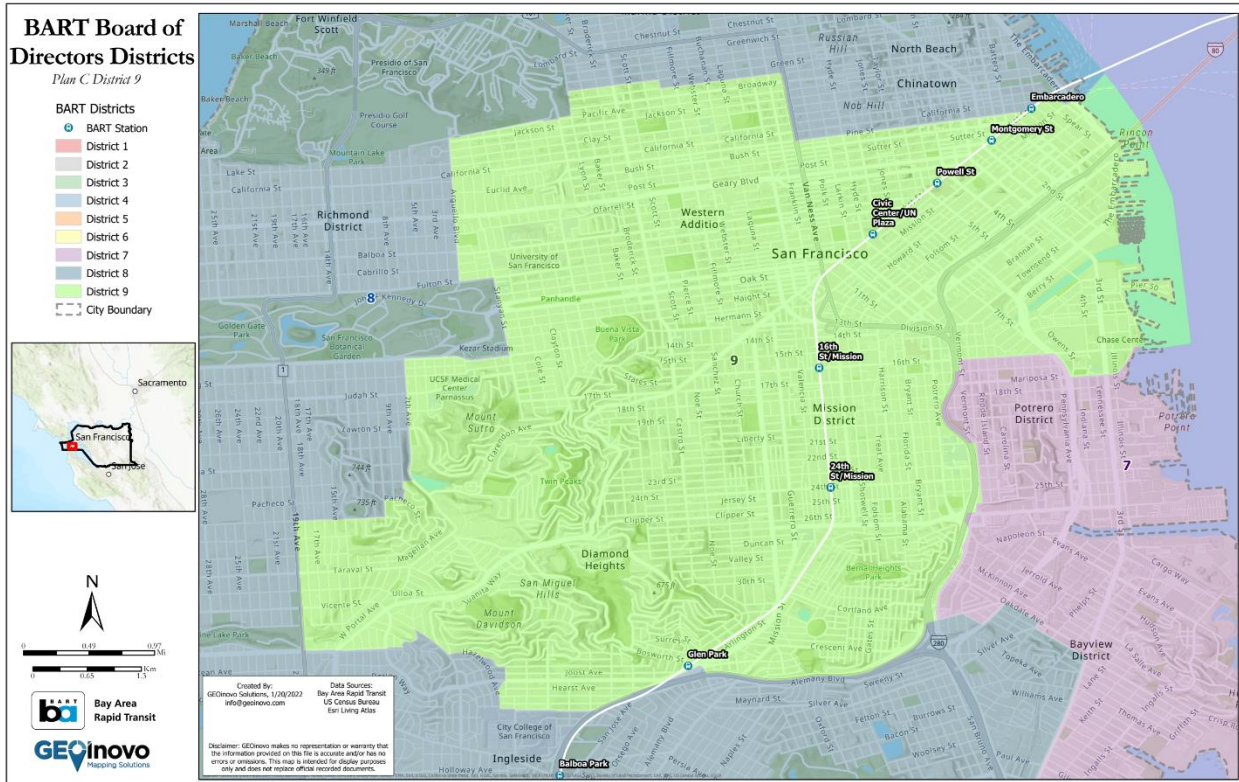
2.8.2. Population Changes to District 8

The following table was taken from file “BART_Population_PLANABC_20220120”.

| Plan C, District 8: Population From Current Districts | Total Population | Percent Population |
|--|-----------------------------|-------------------------------|
| Total | 414,057 | 100.0% |
| District 7 | 17,323 | 4.2% |
| District 8 | 323,877 | 78.2% |
| District 9 | 72,857 | 17.6% |

Figure 16 District 8 maintains 78.2% of the current population and takes 17.6% from the current District 9 and 4.2% from District 7.

2.9. DISTRICT 9



District 9 is in San Francisco County includes the following neighborhoods and points of interest in San Francisco: Western Addition, Twin Peaks, Diamond Heights, Glen Canyon Park, St Mary’s Recreation Center, Bernal Heights Park, Union Square, Mission District, Potrero Center, Pier 50, and the Salesforce Transit Center.

BART Stations included in District 9:

- Embarcadero (shared with District 8)
- Montgomery St (shared with District 8)
- Powell St (shared with District 8)
- Civic Center/UN Plaza
- 16th St/Mission
- 24th St/Mission
- Glen Park (shared with District 8)

2.9.1. CVAP Population Changes to District 9

The following table was taken from file “BART_CVAP_PLANABC_20220120”.

| Plan C, District 9: CVAP From Current Districts | Total CVAP | Percent CVAP |
|--|-----------------------|-------------------------|
| Total | 301,770 | 100.0% |
| District 7 | 20,198 | 6.7% |
| District 8 | 47,199 | 15.6% |
| District 9 | 234,373 | 77.7% |

Figure 17 District 9 maintains 77.7% of the current CVAP population and takes 15.6% from the current District 8 and 6.7% from the current District 7.

2.9.2. Population Changes to District 9

The following table was taken from file “BART_Population_PLANABC_20220120”.

| Plan C, District 9: Population From Current Districts | Total Population | Percent Population |
|--|-----------------------------|-------------------------------|
| Total | 414,037 | 100.0% |
| District 7 | 35,448 | 8.6% |
| District 8 | 59,813 | 14.4% |
| District 9 | 318,776 | 77.0% |

Figure 18 District 9 maintains 77.0% of the current population and takes 14.4% from the current District 8 and 8.6% from District 7.