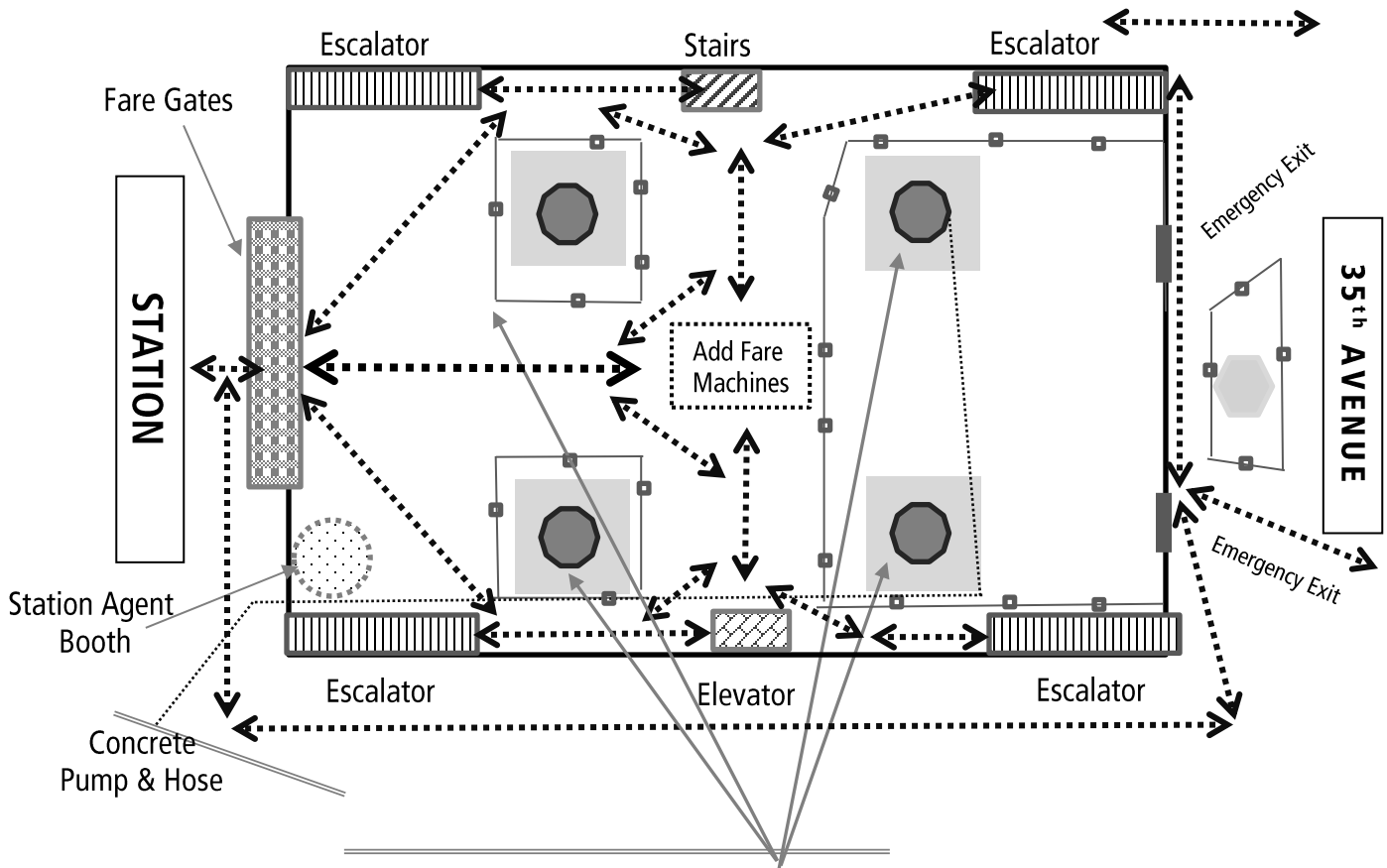


# EARTHQUAKE SAFETY CONSTRUCTION ACTIVITY LOCATIONS

## Stage 1 Construction inside FRUITVALE STATION, Phase B CONCOURSE



\*\*\*THANK YOU FOR YOUR PATIENCE AND COOPERATION DURING CONSTRUCTION\*\*\*  
 Construction Work Locations at Fruitvale Station (Column and pier cap structures located inside the concourse. Stage 2, direct access to add fare machines restored and construction activity inside the concourse continues.) – **In Progress**

**Legend:**

Temporary enclosure	—■—
<b>ADA/Pedestrian path</b>	←.....→
Concrete pump & hose	.....

**Note:** During Construction, all stairs, elevators, escalators, utility rooms and restrooms are expected to remain open and accessible. Only one emergency exit (of the two) will remain accessible during construction.